

# ROLLING RIVER SCHOOL DIVISION POLICY

## Organizational Structure

CB/P

The Board will maintain a unitary Divisional administrative structure and delegate authority to the Superintendent to be the Chief Executive Officer for the Division.

The Superintendent / Board will establish, and maintain the organizational structure by appointing administrative staff. The administrative staff will provide the professional leadership required to direct those functions necessary for the efficient organization and implementation of the Board's goals and objectives.

### **Index**

**Regulation:** Organizational Chart

**Date Adopted:** January 4, 1986

**Date Revised:** March 9, 2006

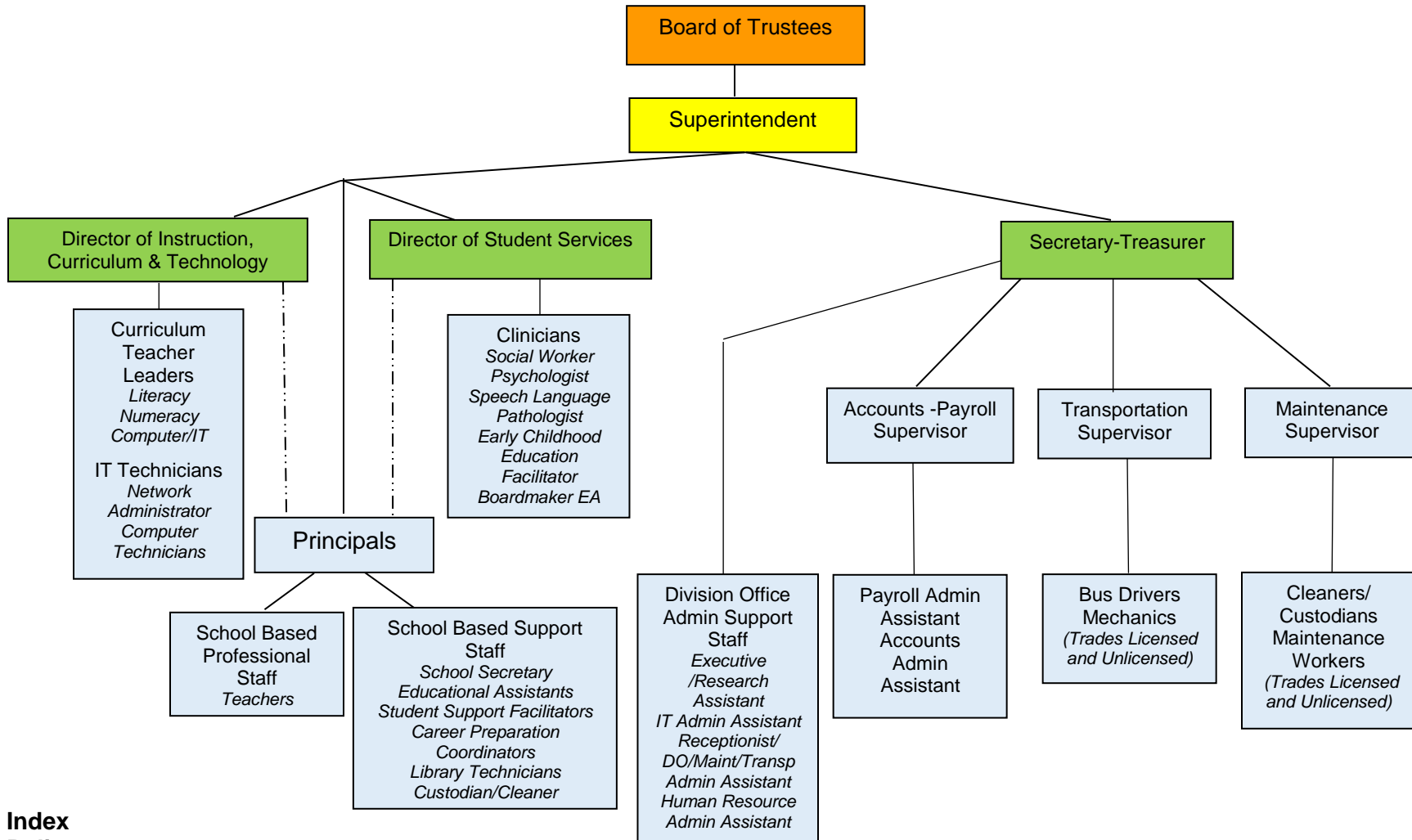
**Date Reaffirmed:** November 17, 2009

**Date Revised:** September 17, 2014

**Date Revised:** February 15, 2017

# ROLLING RIVER SCHOOL DIVISION REGULATION

## Organizational Structure CB/R



### Index Policy

**Date Adopted:** March 9, 2006  
**Date Revised:** March 24, 2008  
**Date Reaffirmed:** November 17, 2009  
**Date Revised:** September 17, 2014  
**Date Revised:** February 15, 2017