

ROLLING RIVER SCHOOL DIVISION POLICY

Organizational Structure

CB/P

The Board will maintain a unitary Divisional administrative structure and delegate authority to the Superintendent to be the Chief Executive Officer for the Division.

The Superintendent/Board will establish and maintain the organizational structure by appointing administrative staff. The administrative staff will provide the professional leadership required to direct those functions necessary for the efficient organization and implementation of the Board's goals and objectives.

Index

Regulation: Organizational Chart

Date Adopted: January 4, 1986

Date Revised: March 9, 2006

Date Reaffirmed: November 17, 2009

Date Revised: September 17, 2014

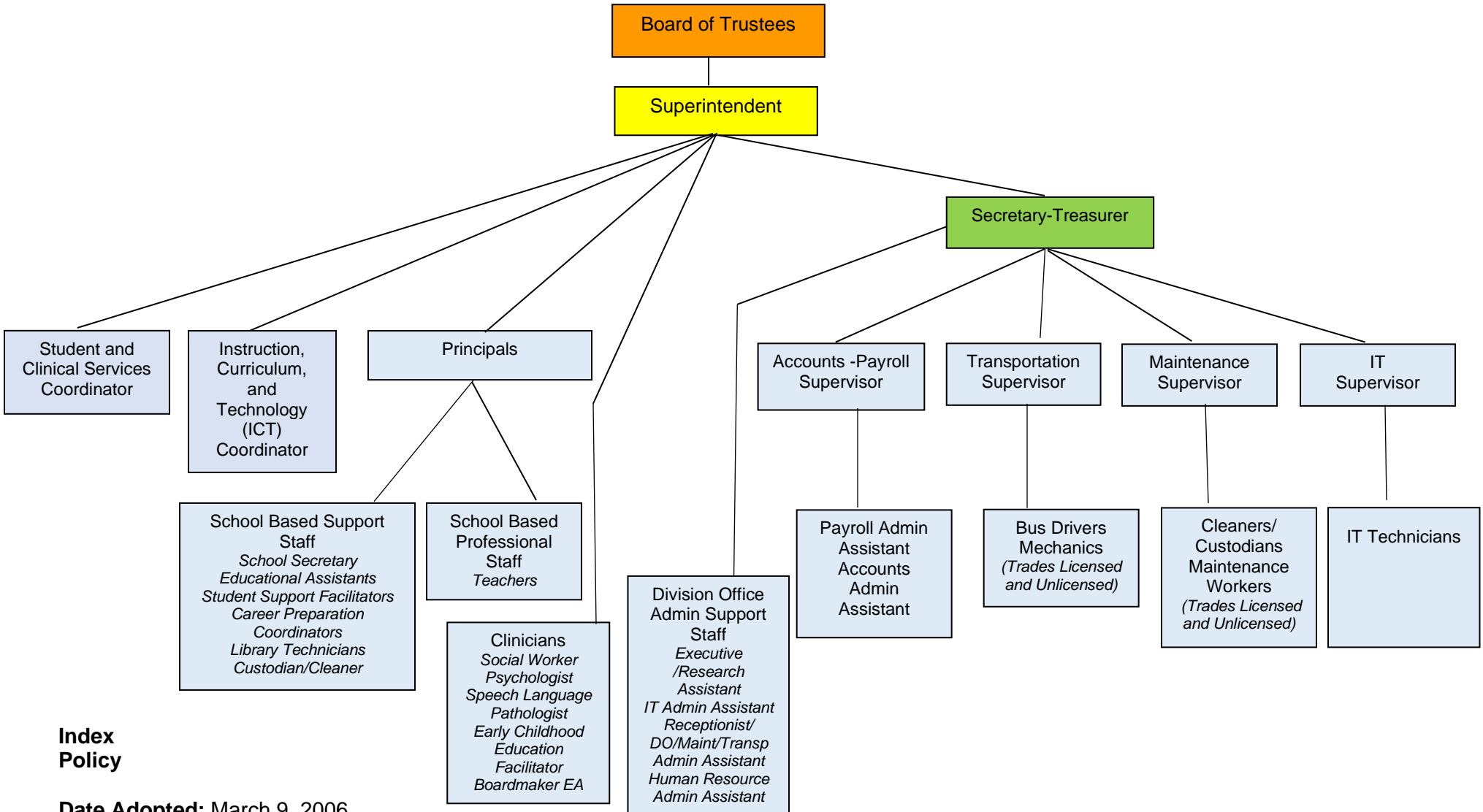
Date Revised: February 15, 2017

Date Revised: December 1, 2020

ROLLING RIVER SCHOOL DIVISION REGULATION

Organizational Structure

CB/R



Index Policy

Date Adopted: March 9, 2006

Date Revised: March 24, 2008

Date Reaffirmed: November 17, 2009

Date Revised: September 17, 2014

Date Revised: February 15, 2017

Date Revised: December 1, 2020